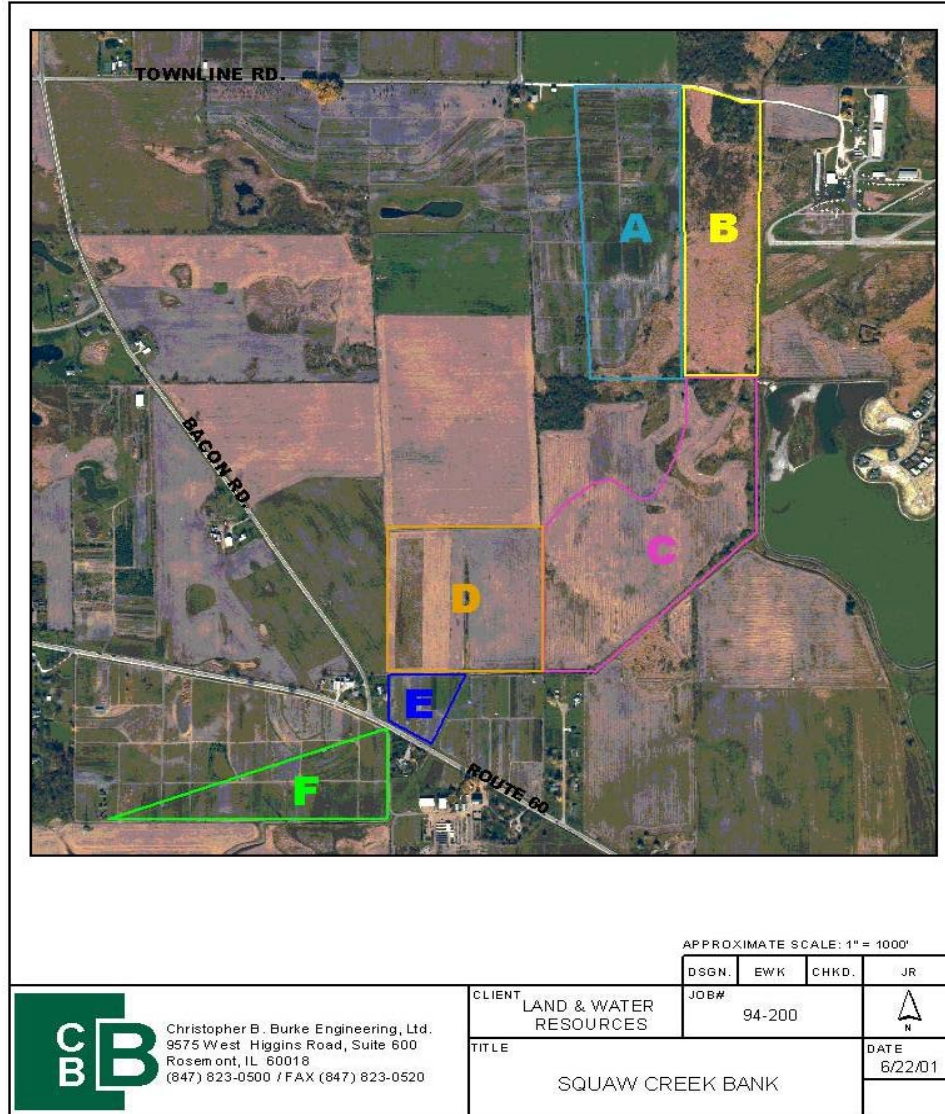


Squaw Creek Wetland Mitigation Bank Lake County, Illinois

Developed by: Land and Water Resources, Inc. (LAWR) and EcoLogic Planning Inc. (EcoLogic) d.b.a. Wetlands Mitigation of Illinois, LLC

This bank is being constructed in 6 phases, phasing plan below. The entire bank was permitted in 2002.



Phase A has its deed restriction imposed and the financial securities in place. We anticipate that phases B, D and E will all be ready for sales in 2002. The other phases will start when wetland credit demand warrants them.

Land and Water Resources, Inc.
 9575 W. Higgins Road, Suite 470
 Rosemont, IL 60018
 Phone: 847-692-7170
 Fax: 847-318-9793
jryan@lawrinc.com
www.lawrinc.com