



# BAYOU CONWAY MITIGATION BANK

WWW.DELTALAND-SERVICES.COM

## Project Objectives:

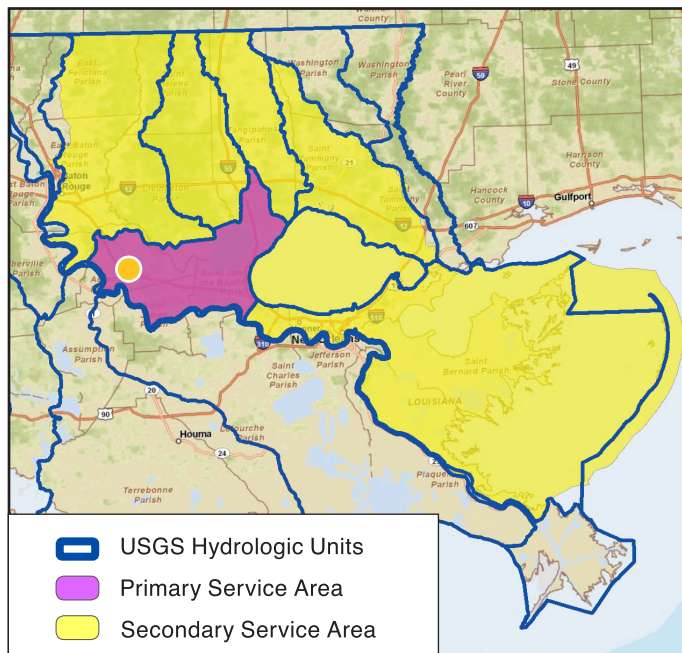
The project area serves as compensatory mitigation for unavoidable impacts to wetlands associated with USACE permits within the 08070204 watershed. This is accomplished through the restoration and protection of bottomland hardwood forest that will provide additional wetland functions which include:

- Expansion of wildlife habitat
- Continuity of existing bottomland hardwood forests
- Water quality benefits via the removal of livestock
- Surface water retention

## Mitigation Work Plan:

Delta Land Services will restore the wetlands with the following:

- Filling of artificial drainages
- Planting of approximately 134,000 bottomland hardwood seedlings
- Long-term protection with a perpetual conservation servitude
- Establishment of maintenance and protection funds in perpetuity



### SERVICE AREAS =

Huc 08070204 (PRIMARY)  
PONTCHARTRAIN RIVER BASIN (SECONDARY)

LOCATION = ASCENSION PARISH, LOUISIANA

PROJECT SIZE = 257.98 ACRES

TOTAL CREDIT VALUE = 763.1