

EAST CENTRAL FLORIDA MITIGATION BANK (SOUTH)

East Central Florida Mitigation Bank (ECFMB) is located in Orange County. ECFMB credits are available to offset impacts for projects located in North & East Orange County, Seminole, Volusia, Osceola and Brevard Counties. Its service area includes drainage basins 18, 19, 23, and part of 20, in the St. Johns River Water Management District. (See service area map on back)

PROJECT FEATURES

ECFMB is a 1,000 +/- acre site located in the northeastern portion of Orange County. The property is contiguous with 58,000 acres of public lands including Orlando Wilderness Park, Seminole Ranch, and Tosohatchee State Reserve. Six state and/or federally listed wildlife species and seven state-listed T& E plant species have been observed on the project site.

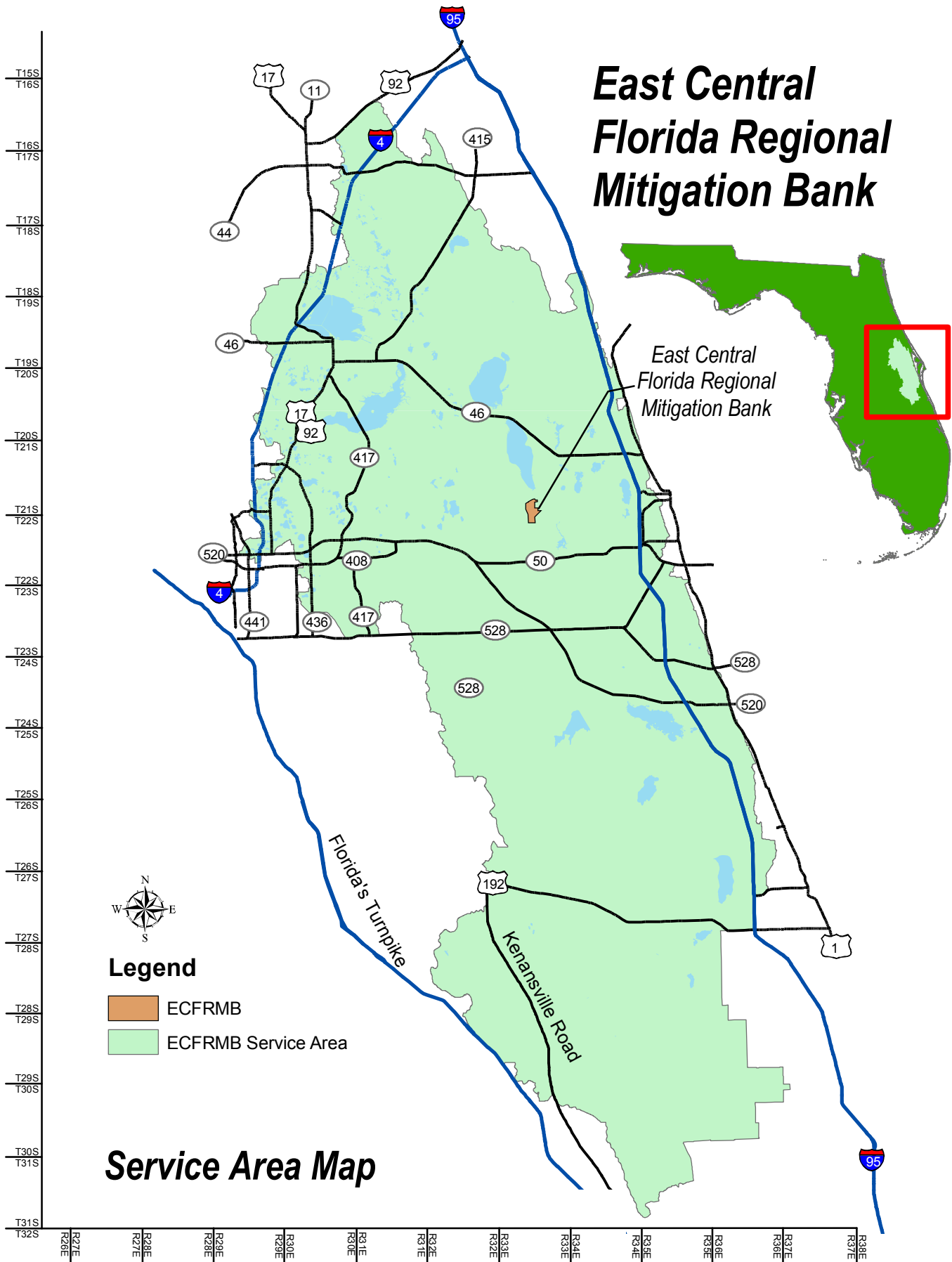
RESTORATION AND ENHANCEMENT

Drainage activities occurred across the eastern portion of the site in the mid 1900s to improve site conditions for cattle and silviculture operations. The emphasis of the bank plan is restoration, enhancement and preservation of the previously degraded forested and herbaceous systems through hydrologic restoration, eradication of exotic and nuisance species and some native plantings.

Construction activities included ditch plugs, culverts and drainage swales to restore the historic hydrology of the site. These drainage improvements re-established a more natural flow pattern in this area and eliminated over-flooding in some areas and under water supply in other areas.

ECFMB has both federal and state freshwater mitigation credits available. The bank was permitted for 286.3 credits. These credits are appropriated to offset either forested or herbaceous impacts. All restoration activities are complete at this bank and all credits have been released

East Central Florida Regional Mitigation Bank



Legend

- ECFRMB
- ECFRMB Service Area

Service Area Map