

Photo courtesy of B. Moose Peterson/USFWS



## Liberty Island Conservation Bank

- Delta smelt • Chinook salmon • Steelhead
- Riparian SRA • Tule marsh SRA

186 acres

Location: Southern Yolo Bypass within the Sacramento/San Joaquin Delta

Mitigation in progress:

Delta smelt

Salmonid habitat

Riparian SRA

Tule marsh SRA

Proposed service area: The entire legal Delta including portions of Yolo, Solano, Sacramento, San Joaquin, Contra Costa, and Alameda Counties

Currently in entitlement - Call for availability

See proposed service area map

Contact:

Julie Maddox

Wildlands, Inc

3855 Atherton Road

Rocklin, CA 95765

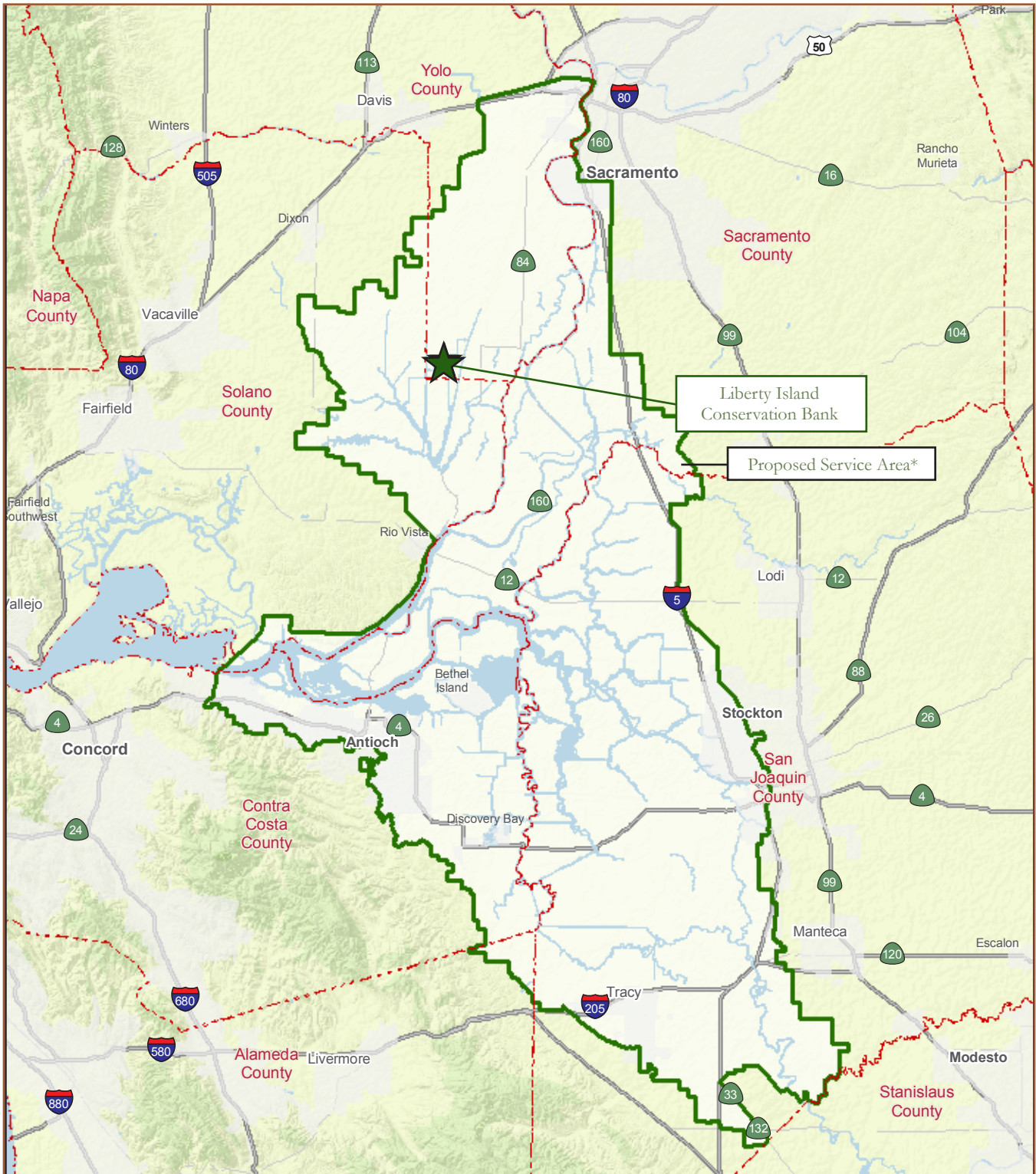
(916) 435-3555

[jmaddox@wildlandsinc.com](mailto:jmaddox@wildlandsinc.com)



**Liberty Island Conservation Bank  
Proposed Service Area\***

**LICB  
Call for availability**



NOT TO SCALE  
\*Proposed service area pending bank entitlement

916-435-3555 • wildlandsinc.com

