

M R G

STREAM AND WETLAND MITIGATION

OHOOPÉE MITIGATION BANK

Ohoopée Mitigation Bank is owned and managed by Mitigation Resource Group of Alpharetta, Georgia. The bank is located in Johnson County in the Ohoopée River Basin. The 487 acre property was approved by the U.S. Corps of Engineers as a commercial stream and wetland mitigation bank in 2006. This project has resulted in 1,900 linear feet of stream restoration, 17,600 feet of riparian restoration and/or preservation, 282 acres of wetland restoration, 90 acres of wetland preservation, and 8.5 acres of upland buffer.

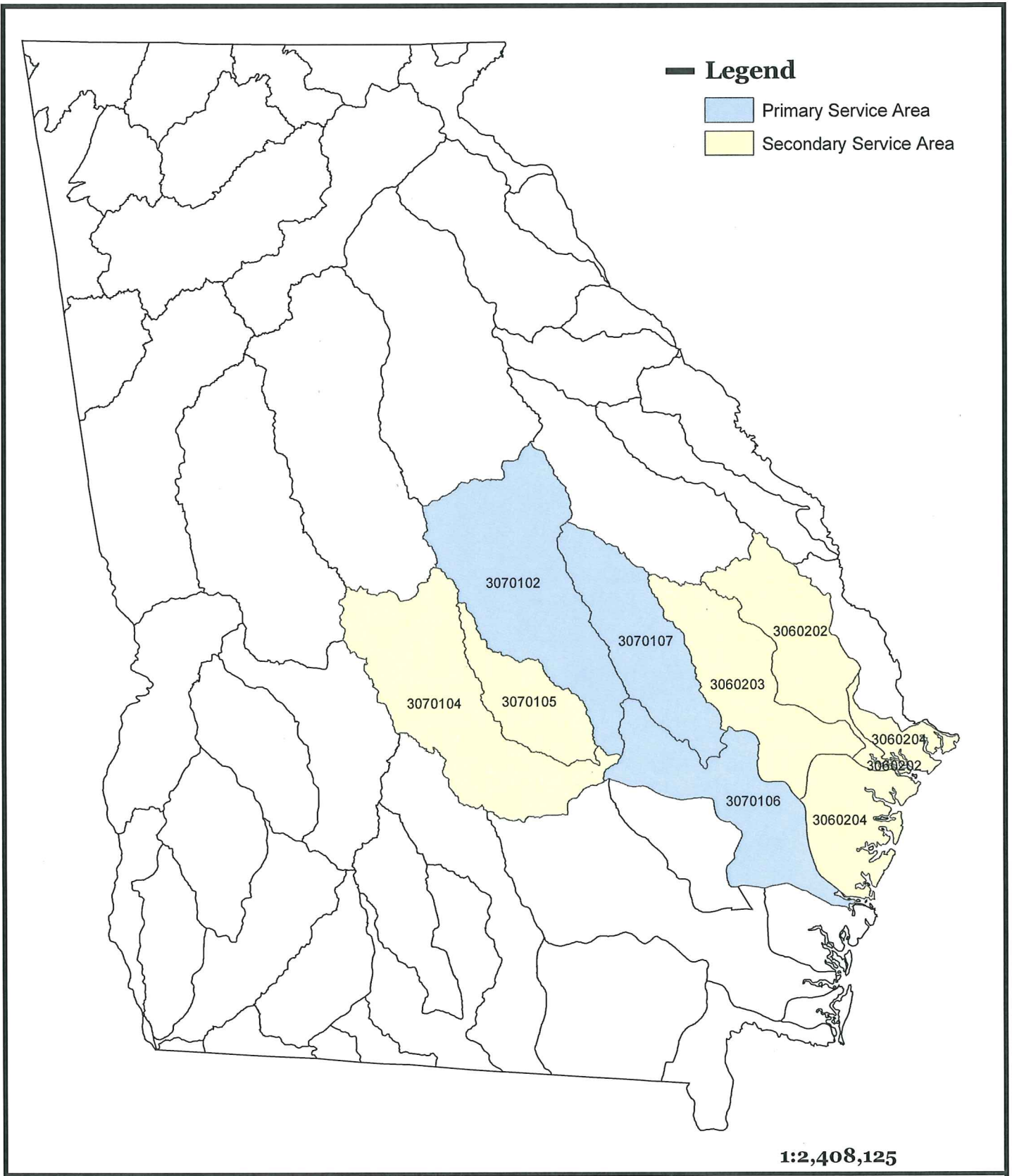
Ohoopée MB's primary service area is the Ohoopée, Lower Oconee, and Altamaha River Basins, but it is also capable of serving the Lower Ocmulgee, Little Ocmulgee, Canoochee, Lower Ogeechee, and Ogeechee Coastal River Basins in its secondary service area.



For sales information,
please contact:
Matt Peevy
404-376-4698
mattpeevy@gmail.com

MRG is in the business of improving, preserving, and selling ecological function to governments, developers, and other groups so that they may legally cause a corresponding decrease in ecological function within a defined area.

Visit our website at WWW.MITIGATIONCREDITS.COM.



1:2,408,125

**Ochopee River
Mitigation Bank
Johnson County, Georgia**


**WETLAND & ECOLOGICAL
CONSULTANTS, LLC
Woodstock, Georgia**

Proposed Service Area
Figure 4
WEC Project No. 02-020604